

## Panama Ports – Before & After

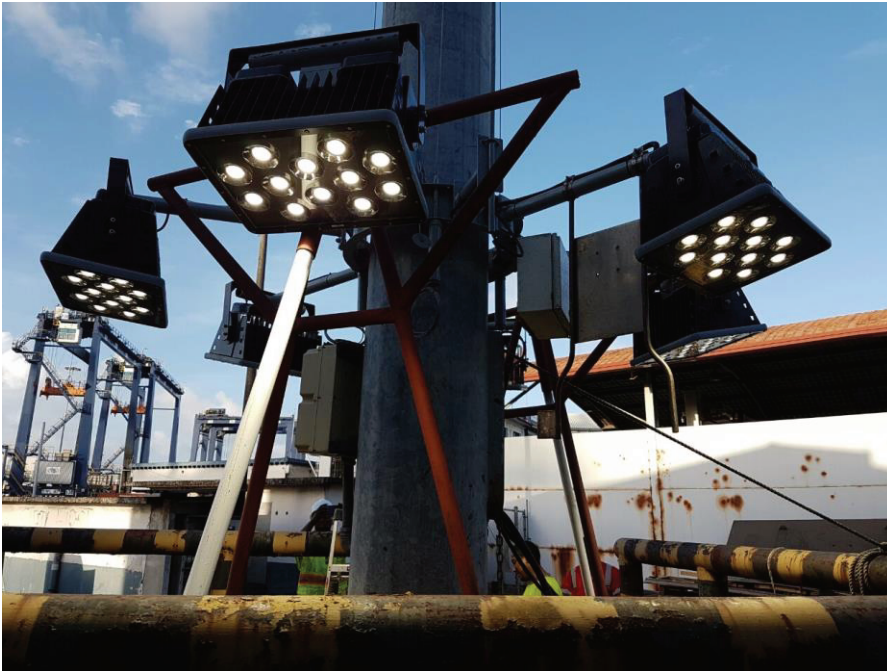
Scope of Project – Quantity 60 520 watt  
Delta LED Flood Lights at “The Mole” –  
Port of Cristóbal, Panama.



FL-3520

## FL-3520

- IP65
- IK09
- 59,800 lumens
- Variety of Beam Angles



Complete line of LED industrial, commercial and maritime lighting at [www.sonarayed.com](http://www.sonarayed.com)