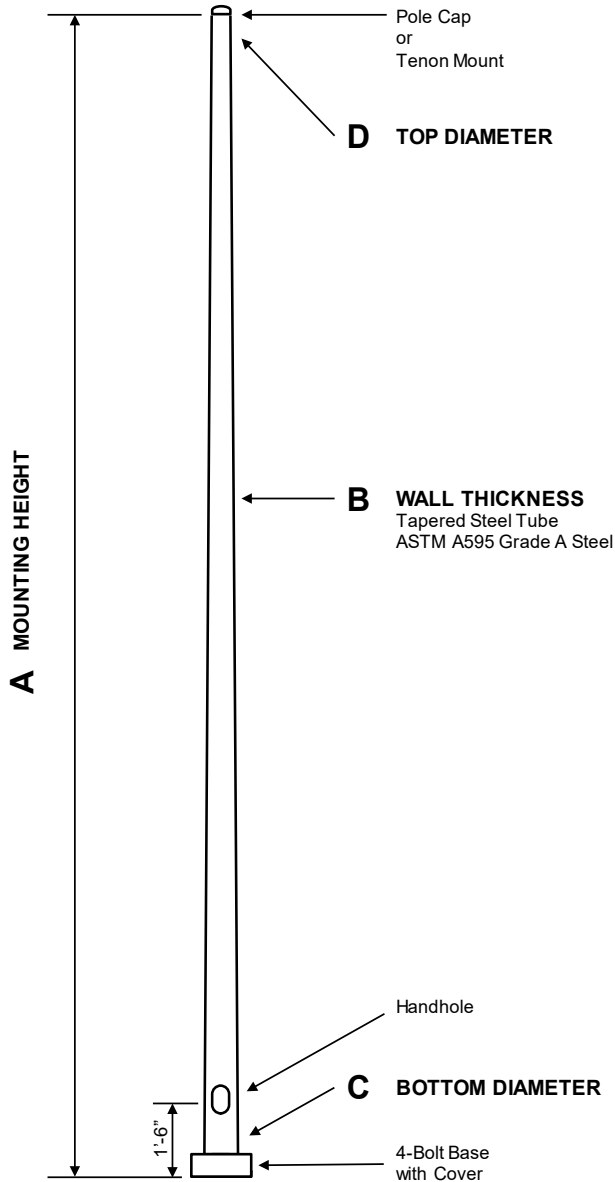


RTS - Round Tapered Steel Pole Anchor Base



C	F	G	H	I
BASE DIA.	BOLT CIR. DIA.	BASE SQ.	BOLT PROJ.	BOLT SIZE
4.5	7.5 - 8.5	8	3.75	.75 x 17 x 3
5.2	8 - 9	8.5	3.75	.75 x 17 x 3
6.1 - 6.6	9.5 - 10.5	10	3.75	.75 x 30 x 3
6.8	10 - 11	10	3.75	.75 x 30 x 3
7.5	10.5 - 11.5	10.5	4.875	1 x 36 x 4
8.0	11 - 12	11	4.875	1 x 36 x 4
8.5	11.5 - 12.5	12	4.875	1 x 36 x 4
9.0 11 GAUGE	12 - 13	12.375	4.875	1 x 36 x 4
9.0 7 GAUGE	13 - 14	12.75	5.875	1.25 x 48 x 6
10	13.5 - 14.5	13	4.875	1 x 48x 4
11	15 - 16	14	5.875	1.25 x 48 x 6
12	16 - 17	15.5	6.75	1.5 x 54 x 6

POLE

Pole shaft shall be weldable-grade, hot-rolled, commercial quality carbon steel tubing conforming to ASTM A595 Grade A. Options include 11 and 7 gauge. All welds shall conform to AWS D1.2 using ER70S-6 electrodes.

BASE STYLE

4-Bolt Steel Base Plate of fabricated hot rolled carbon steel conforming to ASTM A36 or equivalent with 2-piece BaseCover and attaching hardware.

ANCHORAGE

Anchorage Kit will include four (4) L-shaped Steel Anchor Bolts conforming to AASHTO M314-90 Grade 55. Ten inches (10") of threaded end will be galvanized per ASTM A153. Kits will contain eight (8) Hex Nuts, four (4) Lock Washers, and eight (8) Flat Washers (all components Galvanized Steel). A bolt circle template will be provided.

HANDHOLE

Up To 5.9" Butt Diameter - Reinforced, 3" x 5" Handhole with cover, stainless steel screw and backbar. A grounding provision incorporating a tapped 1/2"-13NC hole will be provided.

6"+ Butt Diameter - Reinforced, 4" x 6-1/2" Handhole with cover, stainless steel screw and backbar. A grounding provision incorporating a tapped 1/2"-13NC hole will be provided.

BASE STYLE

Side Drill Mount
Luminaire type, quantity, and orientation information must be provided for Side Drill Mount applications. A luminaire drilling template must also be supplied at time of order.

Tenon Mount - Welded
For Tenon Mount applications specify both Tenon diameter (2.375", 2.875", 3.5", etc.) and length (3", 4", etc.). Tenon style is factory option.

