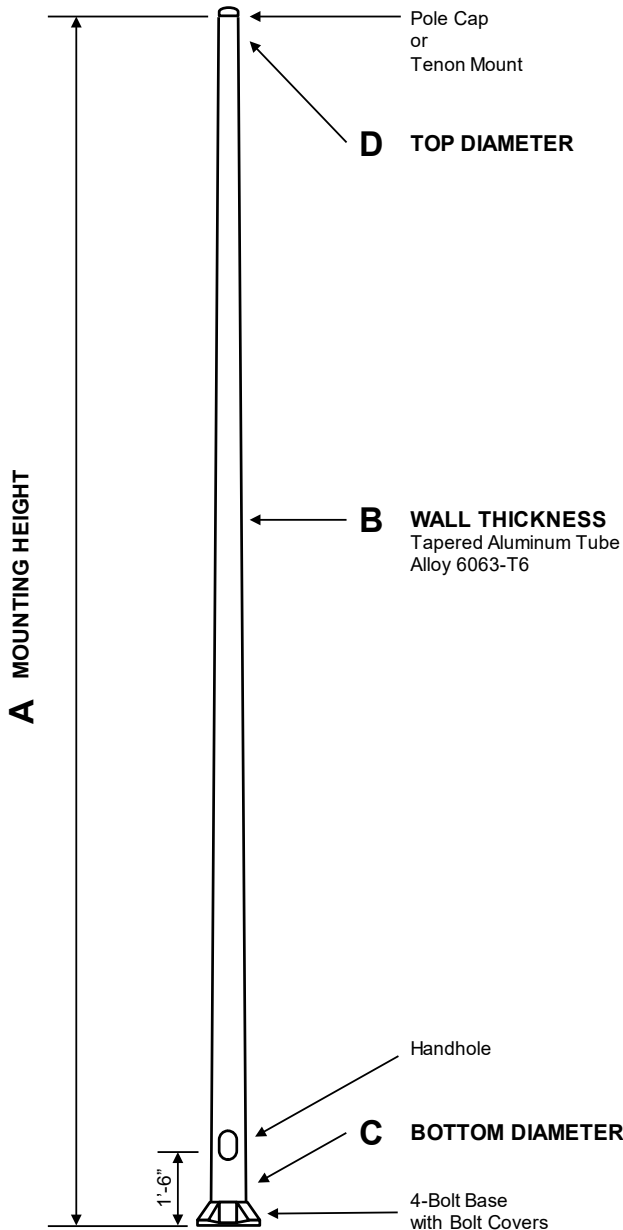


RTA - Round Tapered Aluminum Pole Anchor Base



C	D	F	G	H	I
BUTT DIA.	TOP DIA.	BOLT CIR. DIA.	BASE SQ.	BOLT PROJ.	BOLT SIZE
4	3	6.5 - 8	7.5	2	.75 x 17 x 3
5	3	7.5 - 8	7.5	2	.75 x 17 x 3
6	4.5	9 - 10	9.75	2.75	.75 x 30 x 3
7	4.5	10 - 11	10.5	2.75	1 x 36 x 4
8	4.5	11 - 12	11.25	2.75	1 x 36 x 4
9	4.5	12.5 - 14	12.75	2.75	1 x 36 x 4
10 Up To .250"	6	14 - 15	14	3.25	1 x 48 x 4
10 .312"	6	14 - 15	14	3.25	1.25 x 48 x 6

POLE

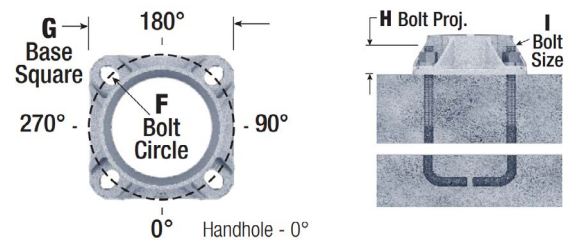
The pole shaft is constructed of seamless extruded tube of 6063 Aluminum Alloy per the requirements of ASTM B221. The shaft assembly shall be full-length heat treated after base weld to produce a T6 temper.

BASE STYLE

4-Bolt Cast Aluminum Base Flange of Alloy 356-T6 with Aluminum Bolt Covers (Alloy 356-F) and Stainless Steel Hex Head Attaching Screws.

ANCHORAGE

Anchorage Kit will include four (4) L-shaped Steel Anchor Bolts conforming to AASHTO M314-90 Grade 55. Ten inches (10") of threaded end will be galvanized per ASTM A153. Kits will contain four (4) Hex Nuts, four (4) Lock Washers, and four (4) Flat Washers (all components Galvanized Steel). A bolt circle template will be provided.



HANDHOLE

4"-5" Butt Diameter - 2" x 4" Handhole with curved Lap Style Aluminum Door and two (2) SS Self-Tapping Attaching Screws. A Grounding Provision incorporating a tapped 1/4"-20NC hole is provided.

6" Butt Diameter - Reinforced, 3" x 5" curved Cast Aluminum Frame (Alloy 356-T6) with Aluminum Door and two (2) SS Hex Head Screws. A Grounding Provision incorporating a 3/8" diameter hole is provided opposite the Handhole.

7"+ Butt Diameter - Reinforced, 4" x 6" curved Cast Aluminum Frame (Alloy 356-T6) with Aluminum Door and two (2) SS Hex Head Screws. Reinforced Frame will contain a tapped 3/8"-16NC Grounding Provision.

BASE STYLE

Side Drill Mount
Luminaire type, quantity, and orientation information must be provided for Side Drill Mount applications. A luminaire drilling template must also be supplied at time of order.

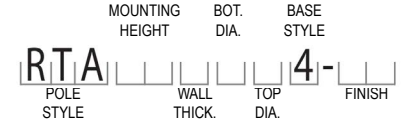
Tenon Mount - Welded or Spun
For Tenon Mount applications specify both Tenon diameter (2.375", 2.875", 3.5", etc.) and length (3", 4", etc.). Tenon style is factory option. Welded Tenons can be specified.

RTA - Round Tapered Aluminum Pole Anchor Base

A MTG HGT	B WALL THICKNESS	C BASE DIAMETER	TOTAL FIXTURE WEIGHT (lbs.)	MAXIMUM EPA					ORDER NUMBER
				90	100	110	120	130	
06	0.125	4	100	17.6	14.2	13.2	11.0	9.2	SON-RTA06B4A4-**
08	0.125	4	100	11.8	9.4	8.6	7.0	5.8	SON-RTA08B4A4-**
08	0.188	4	100	17.2	13.8	12.8	10.6	8.8	SON-RTA08D4A4-**
10	0.125	4	75	8.4	6.6	6.0	4.8	4.0	SON-RTA10B4A4-**
10	0.188	4	100	12.6	10.0	9.2	7.4	6.2	SON-RTA10D4A4-**
10	0.125	5	100	16.6	13.0	12.2	10.0	8.2	SON-RTA10B5A4-**
10	0.188	5	100	24.6	19.6	18.2	15.2	12.6	SON-RTA10D5A4-**
12	0.125	4	50	6.4	4.8	4.4	3.4	2.6	SON-RTA12B4A4-**
12	0.188	4	85	9.6	7.4	6.8	5.6	4.4	SON-RTA12D4A4-**
12	0.125	5	100	12.6	10.0	9.2	7.4	6.0	SON-RTA12B5A4-**
12	0.156	5	100	16.0	12.6	11.6	9.6	7.8	SON-RTA12C5A4-**
12	0.188	5	100	19.2	15.2	14.2	11.6	9.6	SON-RTA12D5A4-**
14	0.125	4	25	4.8	3.6	3.2	2.4	1.8	SON-RTA14B4A4-**
14	0.188	4	60	7.6	5.8	5.2	4.0	3.2	SON-RTA14D4A4-**
14	0.125	5	90	10.0	7.6	7.0	5.6	4.4	SON-RTA14B5A4-**
14	0.156	5	100	12.8	9.8	9.0	7.4	6.0	SON-RTA14C5A4-**
14	0.188	5	100	15.4	12.0	11.2	9.0	7.4	SON-RTA14D5A4-**
16	0.188	4	35	6.0	4.4	4.0	3.0	2.2	SON-RTA16D4A4-**
16	0.125	5	60	8.0	6.0	5.4	4.2	3.2	SON-RTA16B5A4-**
16	0.156	5	85	10.2	7.8	7.2	5.6	4.6	SON-RTA16C5A4-**
16	0.156	5	90	9.8	7.4	6.6	5.2	4.4	SON-RTA16C5B4-**
16	0.188	5	100	12.6	9.8	9.0	7.2	5.8	SON-RTA16D5A4-**
16	0.188	6	100	24.2	19.0	17.6	14.6	12.2	SON-RTA16D6B4-**
18	0.125	5	40	6.4	4.6	4.2	3.0	2.2	SON-RTA18B5A4-**
18	0.156	5	60	8.2	6.2	5.6	4.2	3.4	SON-RTA18C5A4-**
18	0.188	5	85	10.2	7.8	7.0	5.4	4.4	SON-RTA18D5A4-**
18	0.156	6	100	16.2	12.4	11.6	9.4	7.8	SON-RTA18C6B4-**
18	0.188	6	100	20.0	15.6	14.4	11.8	10.0	SON-RTA18D6B4-**
18	0.156	7	100	24.0	18.8	17.4	14.4	12.0	SON-RTA18C7B4-**
20	0.125	5	30	5.0	3.4	3.0	2.0	1.4	SON-RTA20B5A4-**
20	0.156	5	40	6.6	4.8	4.2	3.2	2.2	SON-RTA20C5A4-**
20	0.188	5	55	8.4	6.2	5.6	4.2	3.2	SON-RTA20D5A4-**
20	0.125	6	85	10.0	7.4	6.8	5.4	4.4	SON-RTA20B6B4-**
20	0.156	6	100	13.2	10.0	9.2	7.4	6.2	SON-RTA20C6B4-**
20	0.188	6	100	16.6	12.8	11.8	9.6	8.0	SON-RTA20D6B4-**
20	0.156	7	100	20.2	15.6	14.4	11.8	10.0	SON-RTA20C7B4-**
20	0.188	7	100	24.8	19.6	18.0	14.8	12.4	SON-RTA20D7B4-**
20	0.156	8	100	28.0	22.2	20.6	17.0	14.2	SON-RTA20C8B4-**
20	0.188	8	100	34.4	27.2	25.4	21.0	17.6	SON-RTA20D8B4-**
25	0.156	6	60	8.0	5.6	5.0	4.0	3.2	SON-RTA25C6B4-**
25	0.188	6	85	10.4	7.6	7.0	5.4	4.4	SON-RTA25D6B4-**
25	0.156	7	100	13.0	9.8	9.0	7.2	5.8	SON-RTA25C7B4-**
25	0.188	7	100	16.6	12.8	11.6	9.4	7.8	SON-RTA25D7B4-**
25	0.156	8	100	19.0	14.8	13.6	11.0	9.2	SON-RTA25C8B4-**
25	0.188	8	100	23.8	18.6	17.2	14.0	11.8	SON-RTA25D8B4-**
25	0.219	8	100	28.4	22.2	20.6	17.0	14.2	SON-RTA25E8B4-**
25	0.250	8	100	32.8	25.8	24.0	19.8	16.6	SON-RTA25F8B4-**
25	0.156	9	100	25.8	20.2	18.8	15.4	13.0	SON-RTA25C9B4-**
25	0.156	10	100	33.6	27.0	25.0	20.8	17.4	SON-RTA25C1C4-**
30	0.156	7	60	8.4	5.8	5.2	4.0	3.0	SON-RTA30C7B4-**
30	0.188	7	90	11.0	8.0	7.2	5.6	4.6	SON-RTA30D7B4-**
30	0.156	8	100	13.0	9.6	8.8	7.0	5.6	SON-RTA30C8B4-**
30	0.188	8	100	16.8	12.6	11.6	9.4	7.6	SON-RTA30D8B4-**
30	0.219	8	100	20.4	15.6	14.4	11.6	9.6	SON-RTA30E8B4-**
30	0.250	8	100	23.8	18.4	17.0	13.8	11.6	SON-RTA30F8B4-**
30	0.188	9	100	23.2	18.0	16.6	13.6	11.4	SON-RTA30D9B4-**
30	0.250	9	100	32.4	25.6	23.6	19.6	16.4	SON-RTA30F9B4-**
30	0.188	10	100	30.8	24.4	22.8	18.8	15.8	SON-RTA30D1C4-**
30	0.250	10	100	42.4	33.8	31.6	26.2	22.0	SON-RTA30F1C4-**
35	0.156	8	55	8.6	6.0	5.4	4.0	3.0	SON-RTA35C8B4-**
35	0.188	8	90	11.6	8.4	7.6	5.8	4.6	SON-RTA35D8B4-**
35	0.219	8	100	14.7	10.8	9.8	7.6	6.2	SON-RTA35E8B4-**
35	0.250	8	100	17.4	13.0	12.0	9.6	7.8	SON-RTA35F8B4-**
35	0.188	9	100	16.8	12.8	11.6	9.4	7.6	SON-RTA35D9B4-**
35	0.250	9	100	24.4	19.0	17.4	14.2	11.8	SON-RTA35F9B4-**
35	0.188	10	100	23.0	18.2	16.8	13.8	11.4	SON-RTA35D1C4-**
35	0.219	10	100	27.8	22.0	20.4	16.8	14.0	SON-RTA35E1C4-**
35	0.250	10	100	32.6	25.8	24.0	19.8	16.6	SON-RTA35F1C4-**
35	0.312	10	100	41.8	33.4	31.0	25.6	21.6	SON-RTA35G1C4-**
40	0.188	8	40	7.8	5.2	4.6	3.2	2.4	SON-RTA40D8B4-**
40	0.219	8	70	10.0	7.0	6.2	4.6	3.6	SON-RTA40E8B4-**
40	0.250	8	95	12.4	8.8	8.0	6.2	4.8	SON-RTA40F8B4-**
40	0.188	9	95	11.8	8.6	7.8	6.0	4.8	SON-RTA40D9B4-**
40	0.250	9	100	18.2	13.8	12.6	10.2	8.2	SON-RTA40F9B4-**
40	0.188	10	100	17.0	13.2	12.2	9.8	8.0	SON-RTA40D1C4-**
40	0.219	10	100	21.2	16.6	15.4	12.4	10.2	SON-RTA40E1C4-**
40	0.250	10	100	25.2	19.8	18.4	15.0	12.4	SON-RTA40F1C4-**
40	0.312	10	100	33.0	26.2	24.2	20.0	16.6	SON-RTA40G1C4-**

ORDER NUMBER SEQUENCE

The order numbers for SONARAY poles uses the following identification sequence:



ORDER NUMBER EXAMPLE

SON RTA 20 B 5 A 4 - BA

Round Tapered Aluminum, 20' Mounting Height, 0.125" Wall Thickness, 5" Bottom Diameter, 4.5" Top Diameter, 4-Bolt Base, Black Powder Coat Finish

WALL THICKNESS

- B = 0.125"
- C = 0.156"
- D = 0.188"
- E = 0.219"
- F = 0.250"
- G = 0.312"

BOTTOM DIAMETER

- 4 = 4"
- 5 = 5"
- 6 = 6"
- 7 = 7"
- 8 = 8"
- 9 = 9"
- 1 = 10"

TOP DIAMETER

- A = 3"
- B = 4.5"
- C = 6"

BASE STYLE

- 4 = 4-Bolt Base

FINISH

- 01 = Satin Aluminum
- BA = Black Powder Coat
- BH = White Powder Coat
- BM = Dark Bronze Powder Coat
- BV = Dark Green Powder Coat
- GC = Gray Powder Coat
- ** = Specify Finish

EPA NOTES

Effective Projected Area (EPA) in square feet. EPA's calculated using wind velocity (mph) indicated in accordance with 2009 AASHTO LTS-5 using a 25 year design life. Maximum EPA is based on the luminaire weight shown. Increased luminaire weight may reduce the maximum EPA. If weight is exceeded, or if other design life or code is required, please consult the factory.